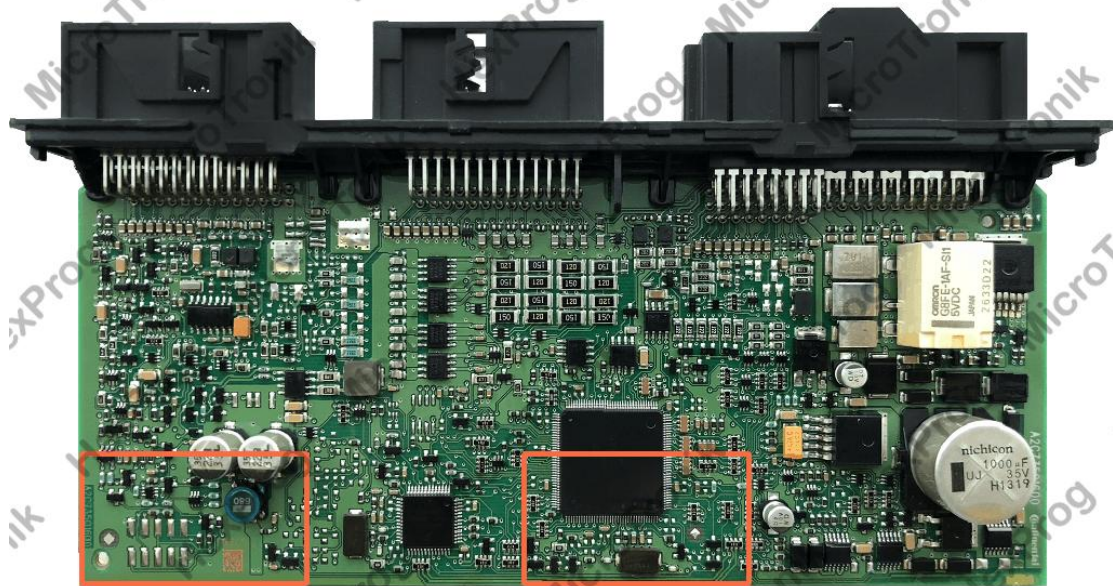


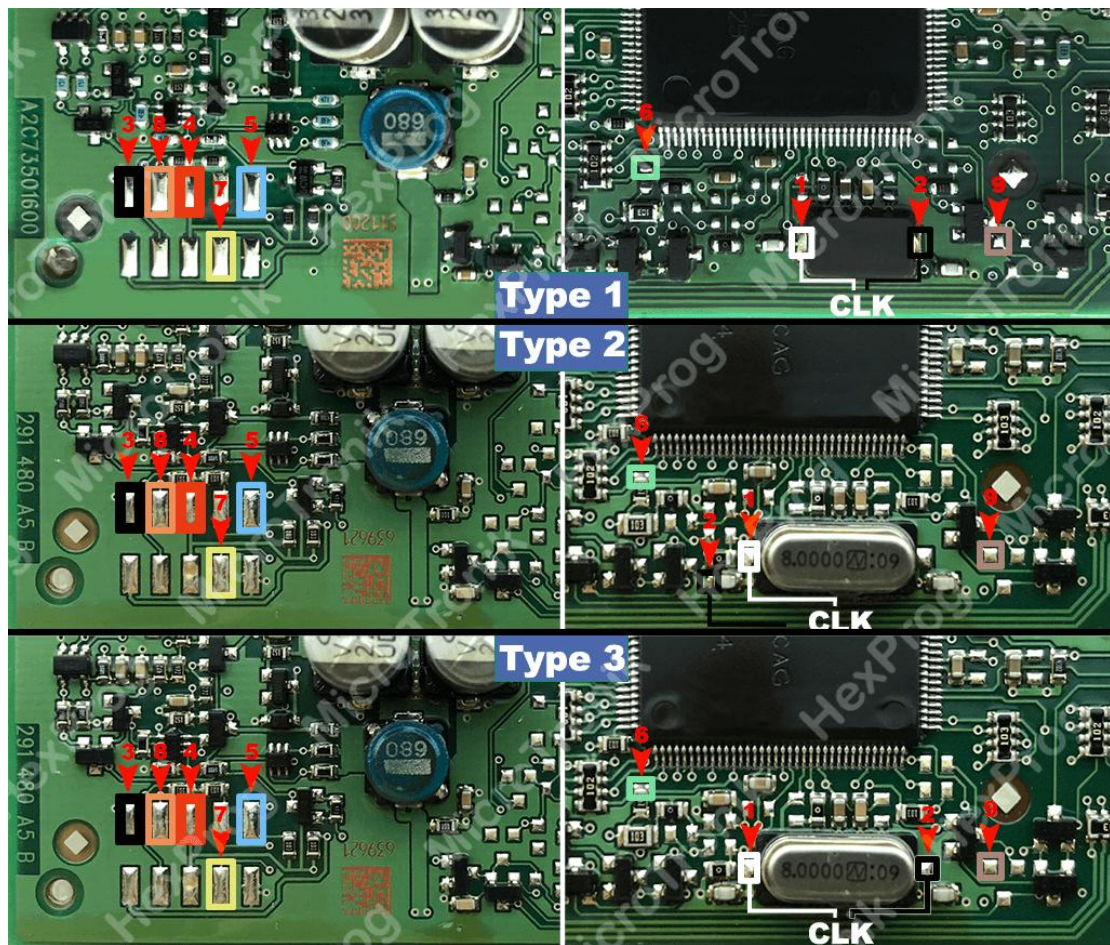
## CAS4/4+ BDM WIRING

1. Unplug CAS from the car (Located under driver side trim panel for pedal mechanism. Careless Removal of the module may cause a damage to the car or the control itself, it must be carried under user's RISK)
2. Remove CAS board from the casing



CAS4/4+

3. Solder wires to CAS based on the below connection diagram using BDM cable



### CAS4/4+ Wiring

4. Select the CAS/CPU version from HexProg software
5. Do the necessary operations on software
6. Unsolder wires
7. Connect CAS back to car

